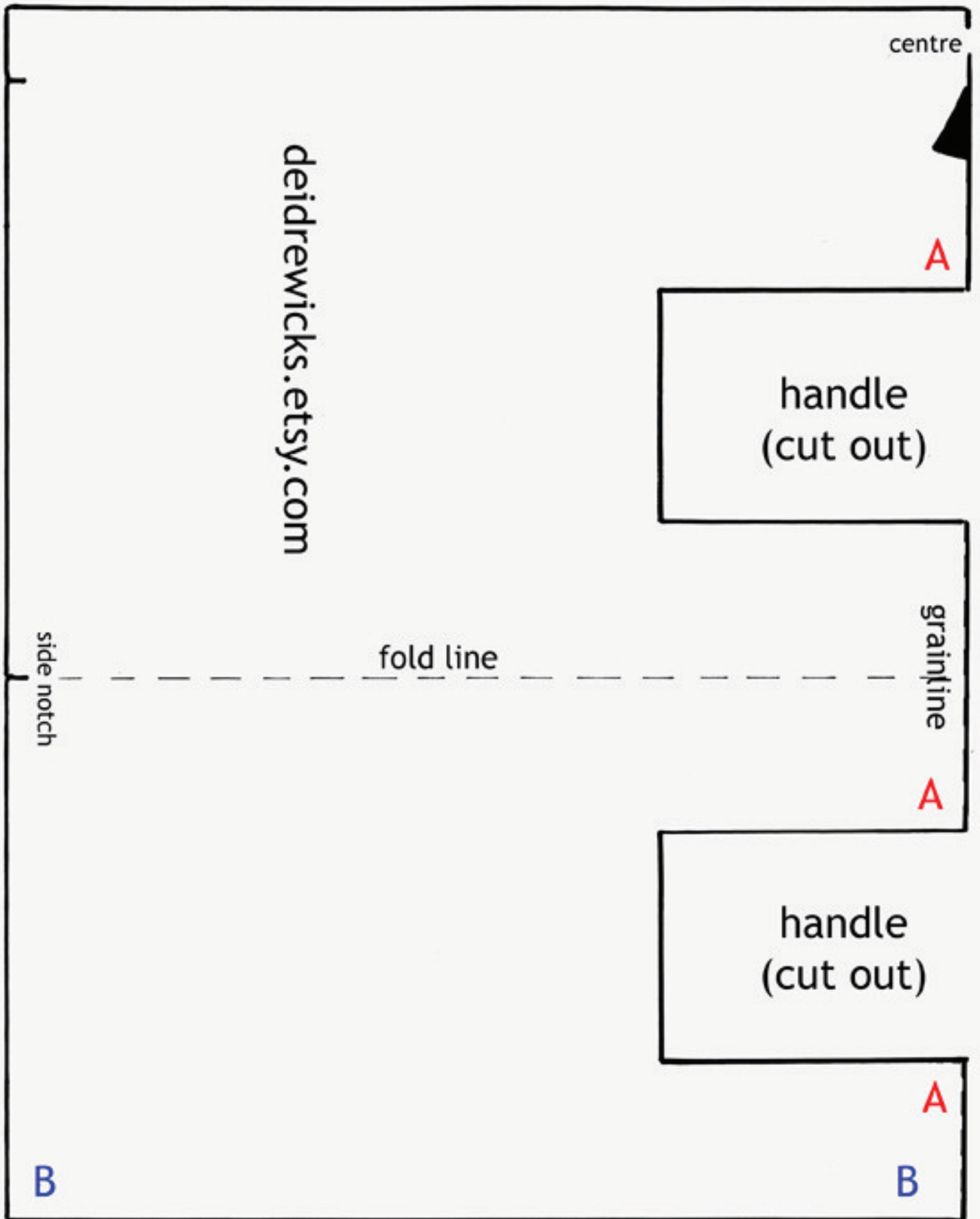
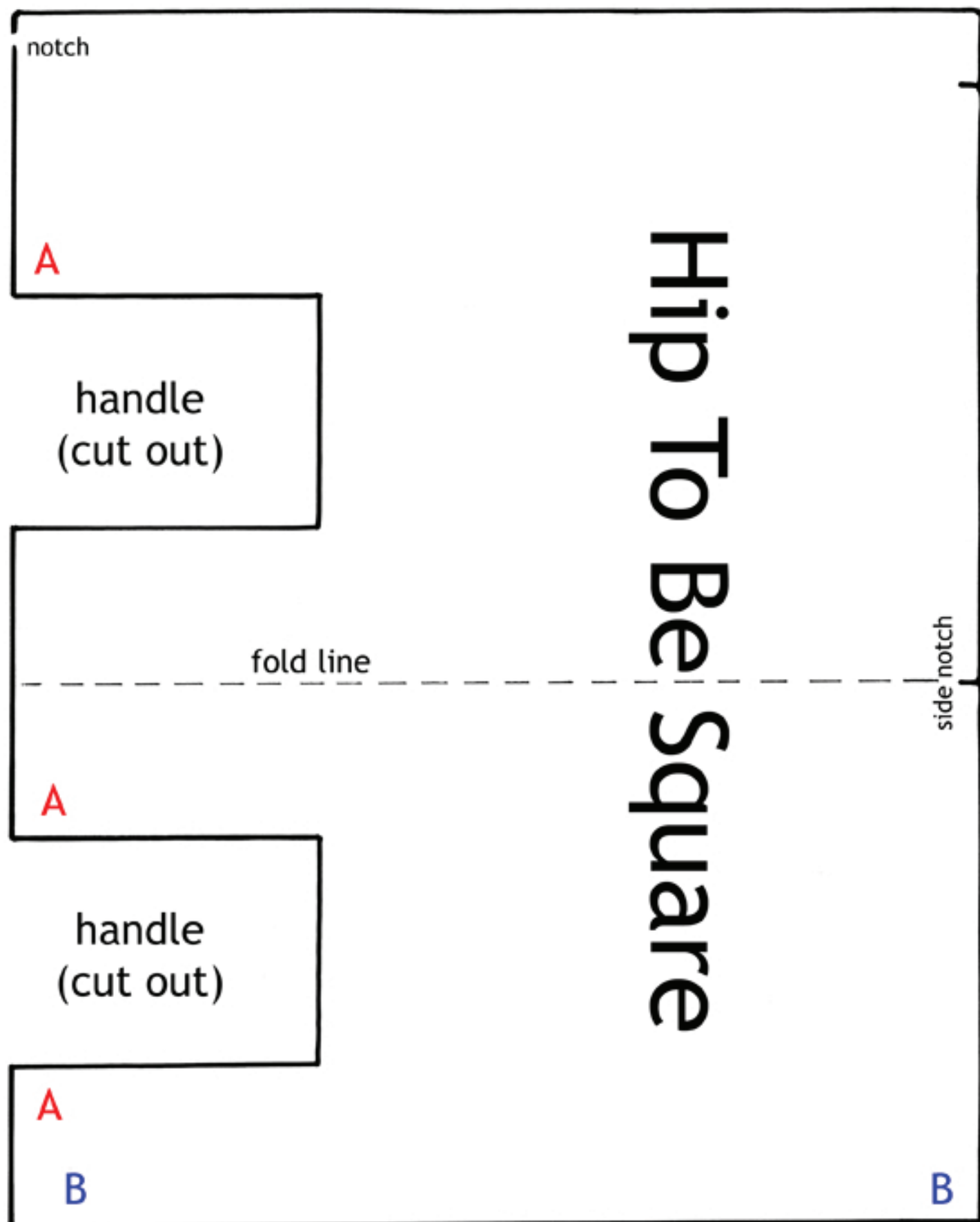
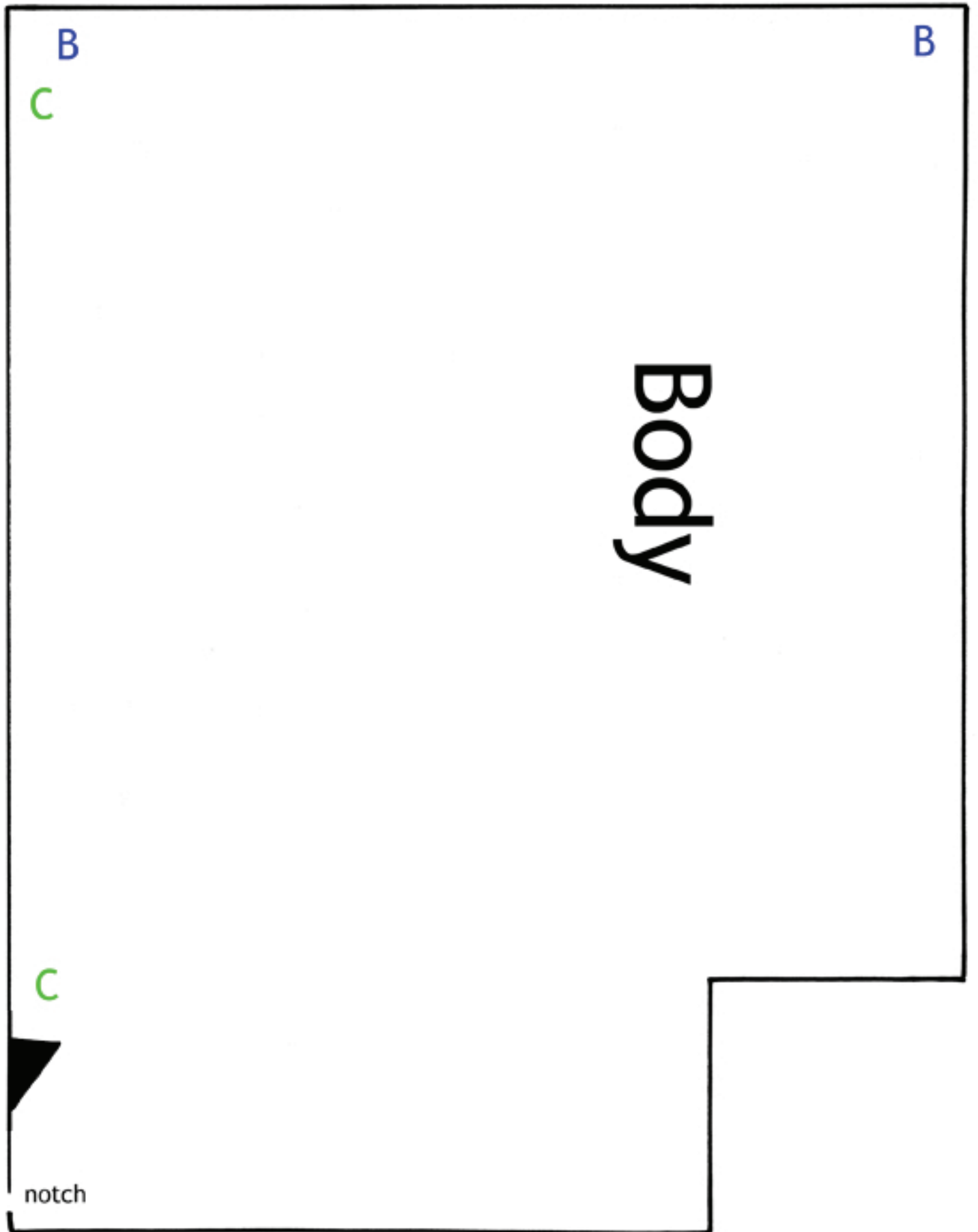


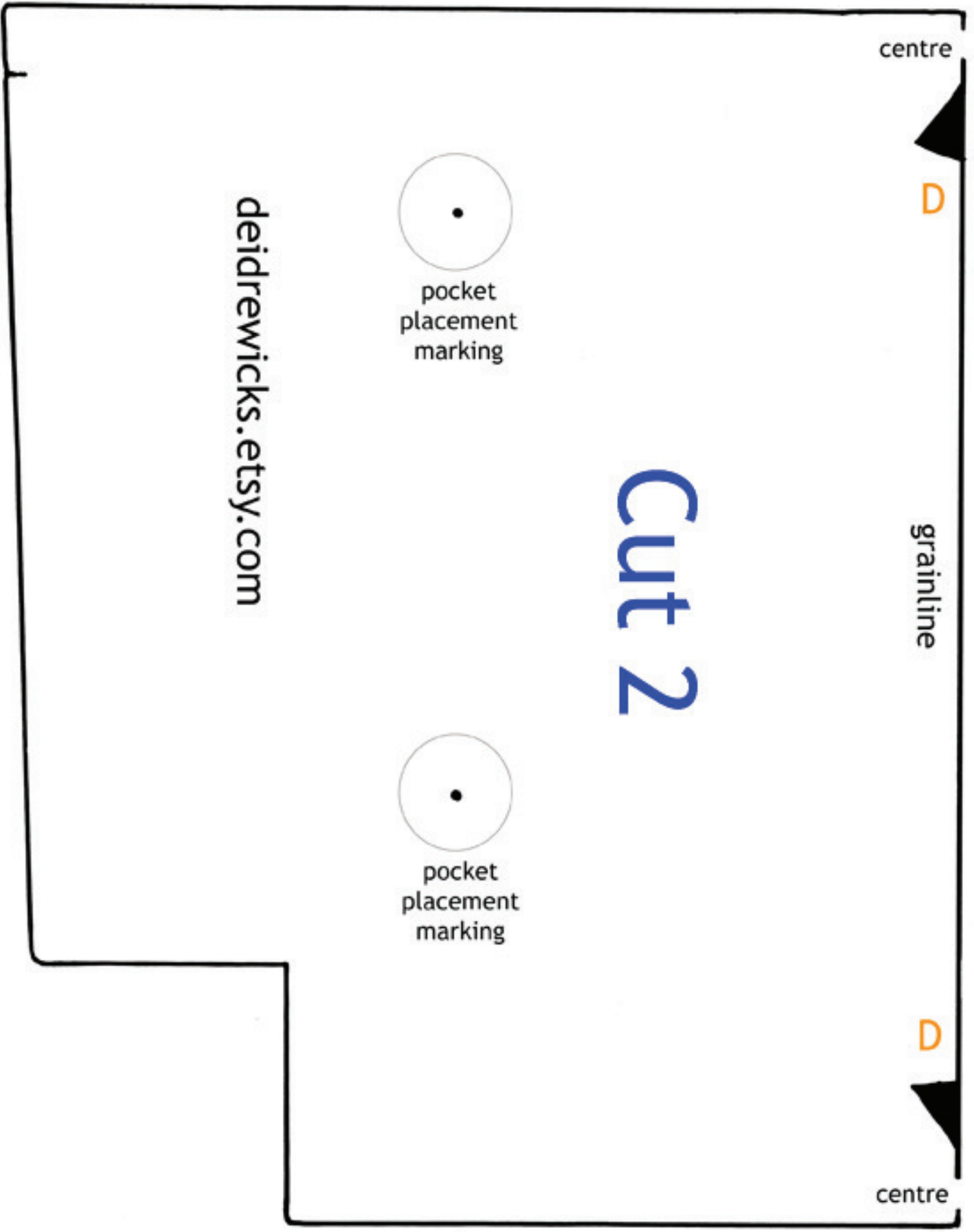
**Hip To Be Square
Pattern Assembly:**

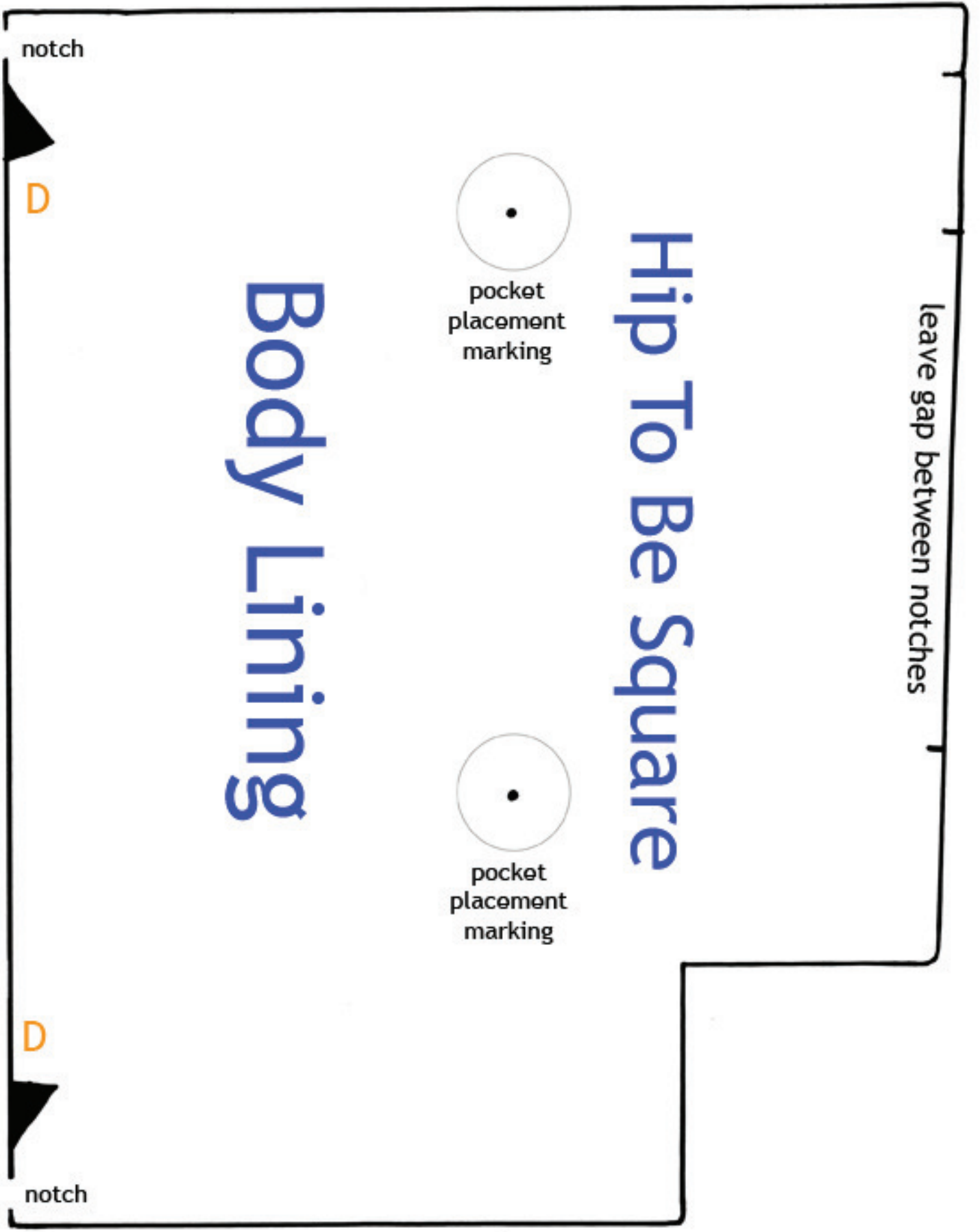
1. Cut out all pieces from the printed sheets following outside lines.
2. Match corresponding coloured letters.
3. Tape pieces together.

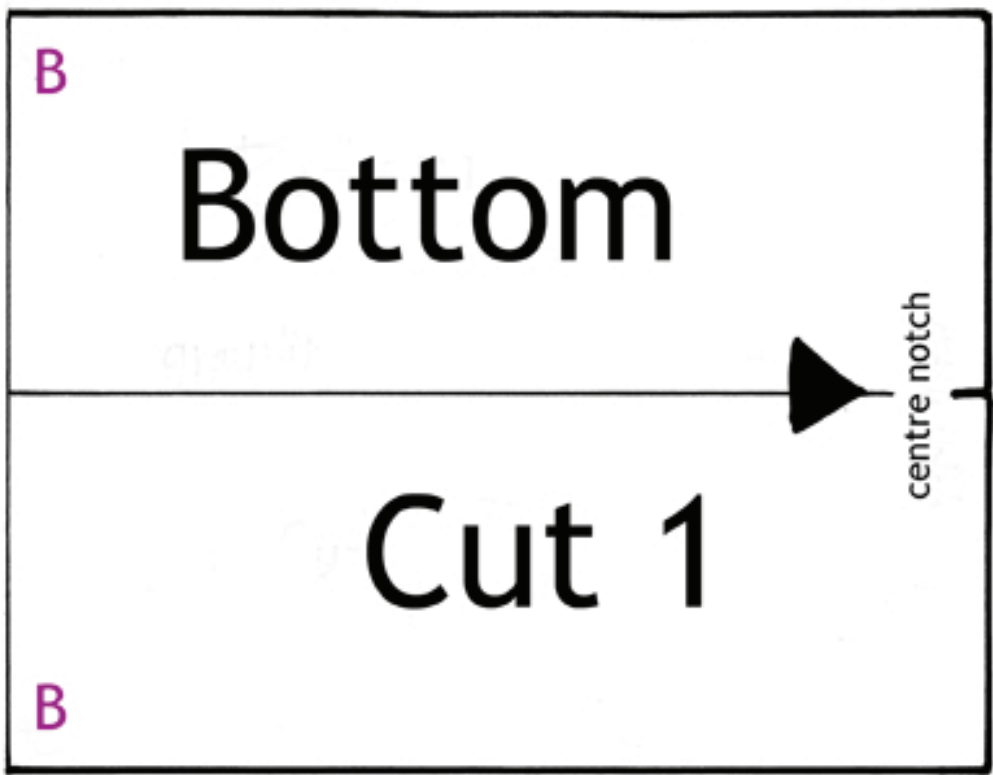
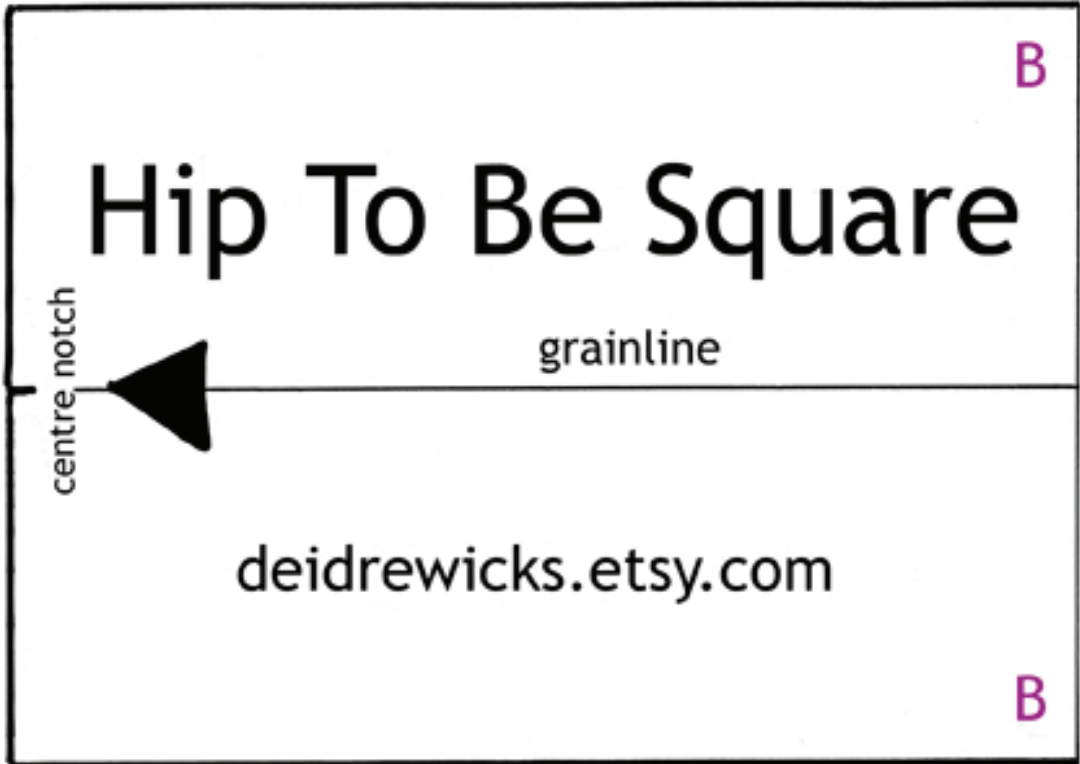












Hip To Be Square

Lining Pocket

grainline

Cut 1

deidrewicks.etsy.com

Hip To Be Square - Handle



cut out

[deidrewicks.etsy.com](https://www.etsy.com/shop/deidrewicks)

Cut 4